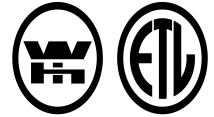




CEILING RADIATION DAMPER
 FOR WOOD TRUSS CEILING ASSEMBLIES
 ETL CLASSIFIED UL263/E119 * INCORPORATES ETL CLASSIFIED UL555C DAMPER
 DUCTED • STEEL PLENUM • SIDE INLET(S)
MODEL: 556RDD



Intertek

QUALIFICATIONS:

ETL CLASSIFIED UL263/E119 CEILING DAMPER

Approved for use in 1 hour fire rated floor/ceiling and roof/ceiling assembly constructed in accordance with material and construction specifications of UL design number: L521, L528, L546, L550, L558, L562, L563, L570, L574, L579, L585, L586, M503, P522, P531, P533, P538, P545, P547, P548, and P552.

Meets NFPA 90A requirements.

Incorporates ETL Classified UL555C evaluated ceiling damper.

DESCRIPTION:

Ceiling dampers are designed to function as a heat barrier in air handling openings penetrating fire resistive membrane ceilings. Model 556RDD has been especially designed to provide protection and simple installation in specific design wood truss ceiling assemblies.

Model 556RDD is designed for installation in the supply (or return) ductwork take-off from an AHU where it penetrates the ceiling and provides a single or multiple-outlet (up to three) plenum to feed 556RD/grille or diffuser assemblies. May also be used as a return.

CONSTRUCTION:

1. Listed fusible link, 212°F (100°C) standard.
2. Blades: 21 GA G60 roll-formed galvanized steel.
3. Blade Insulation: Non-asbestos classified.
4. Damper frame: 21 GA G60 galvanized steel.
5. Steel plenum/sub-frame: 24 GA maximum with round connection collar(s). Maximum of three.
6. Classified Class 0 or 1 flexible air duct connection by others.
7. Plaster flange customized to flange or sleeve.
8. Damper sleeve is extended below ceiling for ducted connection. Damper is mounted in sub-frame to be flush with ceiling when installed.

OPTIONS:

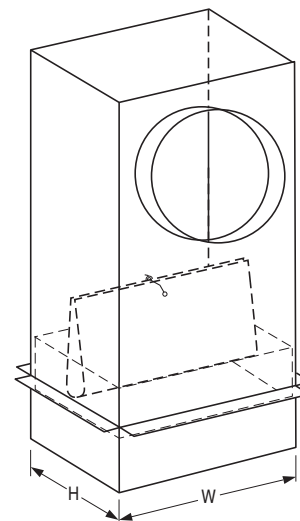
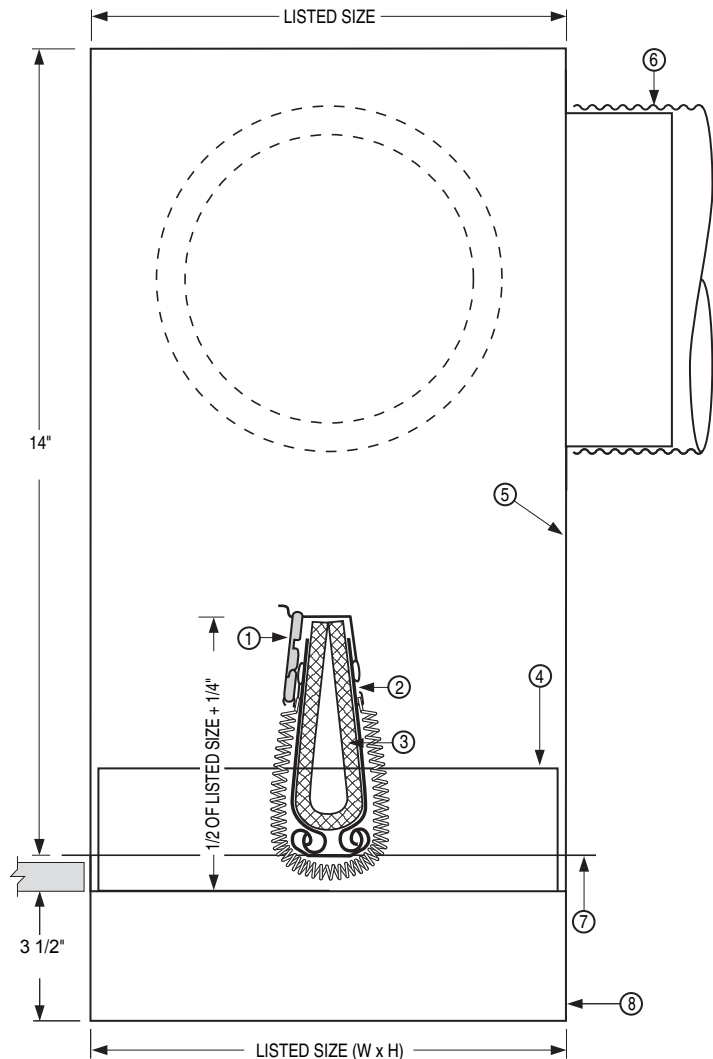
- Non-standard temp. listed fusible link. 165°F (74°C)
- Installation support angles. 26" long.
 - * 2 @ Standard boot rail.
 - * 2 @ 1-1/2 x 1-1/2 x 22 GA angle.

NOTES:

Minimum Size: 4"x4"

Maximum Area Size: 144 square inches

Building code and classification require damper installation in accordance with manufacturer's instructions.



Dimensions are in inches

MODEL 556RDD