



CEILING RADIATION DAMPER
FOR WOOD TRUSS CEILING ASSEMBLIES
ETL CLASSIFIED UL263/E119 * INCORPORATES ETL
CLASSIFIED UL555C DAMPER
GRILLE MOUNT * STEEL PLENUM * DUCTBOARD * SIDE INLET
MODEL: 556RD



QUALIFICATIONS:

ETL CLASSIFIED UL263/E119 CEILING DAMPER

Approved for use in 1 hour fire rated floor/ceiling and roof/ceiling assembly constructed in accordance with material and construction specifications of UL design number: L521, L528, L546, L550, L558, L562, L563, L570, L574, L579, L585, L586, M503, P522, P531, P533, P538, P545, P547, P548, and P552.

Incorporates ETL Classified UL555C evaluated ceiling damper.

Meets NFPA 90A requirements.

DESCRIPTION:

Ceiling dampers are designed to function as a heat barrier in air handling openings penetrating fire resistive membrane ceilings. Model 556RD has been especially designed to provide protection and simple installation in specific design wood truss ceiling assemblies.

The 556RD assembly consists of a rectangular ceiling damper recessed in a sheet metal register box (boot) by others with a round inlet collar, that accommodates a steel grille register or diffuser.

STANDARD CONSTRUCTION:

1. Fusible Link: Listed fusible link, 212° F standard (100° C)
2. Blades: 21 GA roll-formed galvanized steel.
3. Blade insulation: Non-asbestos classified.
4. Damper frame: 21 GA galvanized steel.
5. Steel Plenum/Sub-Frame: 24 GA maximum with round connection collar.
6. Duct: Classified class 0 or 1 flexible air duct connection by others.
7. Flange: 1" x 1".
8. Steel grille/register/diffuser: By others. Bottom of damper sub-frame is flush with ceiling. Standard depth for grille clearance is 2 1/2".

*Minimum size: 4 x 4

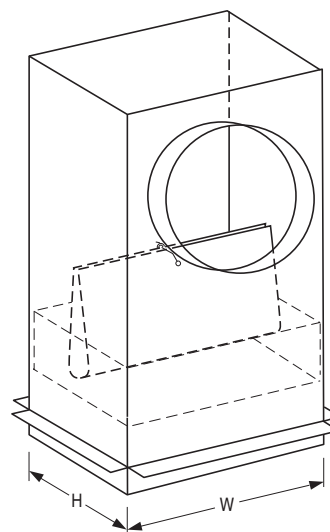
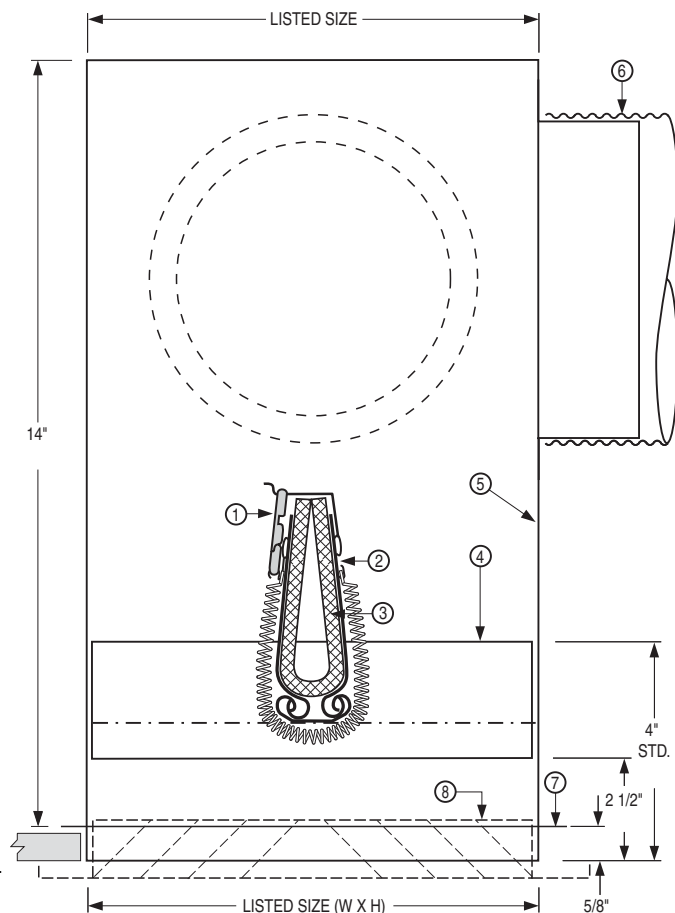
*Maximum size: 12 x 12

***NOTE:** For damper sizes greater than 144 square inches a duct board plenum is required.

Building code and Classification require damper installation in accordance with manufacturers instructions.

OPTIONS:

- Non-standard temp. listed fusible link. 165° F (74°C)
- Installation support angles. 26" long.
 * 2 @ Standard boot rail
 * 2 @ 1-1/2" x 1-1/2" x 22 GA angle
- Drywall flange: 1" wide x 1" deep



Dimensions are in inches

Note: CRDD Style damper shown. CRDS single blade damper also available.

NOTE: OVER 12 x 12 REQUIRES DUCTBOARD PLENUM