



CEILING RADIATION DAMPER
 FOR WOOD TRUSS CEILING ASSEMBLIES
 ETL CLASSIFIED UL263/E119
 INCORPORATES ETL CLASSIFIED UL555C DAMPER
 INSULATED REGISTER BOX • SIDE INLET
MODEL: 509RD



QUALIFICATIONS:

ETL CLASSIFIED UL263/E119 CEILING DAMPER

Approved for use in 1 hour fire rated floor/ceiling and roof/ceiling assembly constructed in accordance with material and construction specifications of UL design number: L521, L528, L546, L550, L558, L562, L563, L570, L574, L579, L585, L586, M503, P522, P531, P533, P538, P545, P547, P548, and P552.

Incorporates ETL Classified UL555C evaluated ceiling damper.

Meets NFPA 90A requirements.

DESCRIPTION:

Ceiling dampers are designed to function as a heat barrier in air handling openings penetrating fire resistive membrane ceilings. The model 509 has been especially designed to provide protection and simple installation in specific design wood truss ceiling assemblies.

The 509 assembly consists of a rectangular ceiling damper recessed in an internally insulated sheet metal register box (boot) with a round 90° side inlet collar, that accommodates a steel grille or register.

CONSTRUCTION:

1. Listed fusible link, 212°F (100°C) standard.
2. Blade: 21 GA G60 roll-formed galvanized steel.
3. Blade Insulation: Non-asbestos classified.
4. Damper frame: 21 GA G60 galvanized steel.
5. Internal Insulation: 1 1/2" thick. R-Value 6.3.
6. Steel plenum: 24 GA max. with round connection collar.
7. Classified Class 0 or I flexible air duct connection by others.
8. Plaster flange: 1" wide by 1/2" deep.
9. Steel grille/register (by others). Standard depth for grille clearance is 2 1/2".

*Maximum Area Size: 144 square inches

(No one dimension greater than 14")

Collar size: 4"-10".

Minimum size: 6 x 6

Maximum size: Square: 12 x 12 Maximum

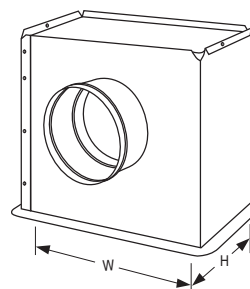
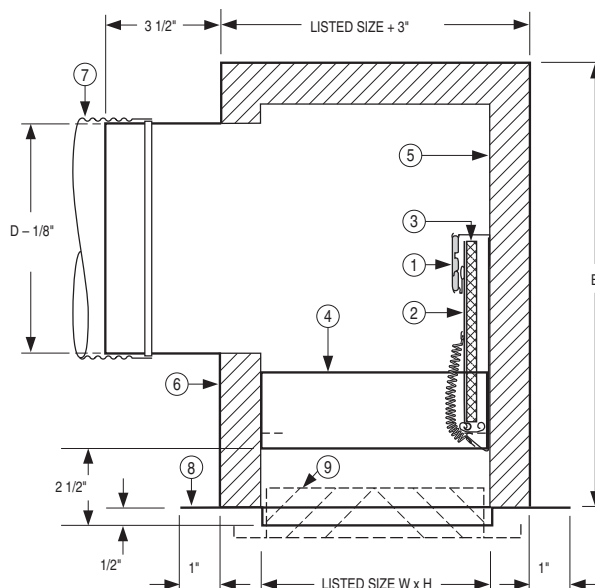
size: Rectangular: 14 x 10

OPTIONS:

- Non-standard temp. listed fusible link 165°F (74°C).
- Installation support angles 26" long.
 *2 @ standard boot rail (2 sides).
 *2 @ 1-1/2" x 1-1/2" x 22 GA angle (2 sides).
- Plaster flange available in 1" wide by 1" deep.
- Available in R4, R6, or R8 insulation.
- Available uninsulated.

NOTE:

Building code and Classification require damper installation in accordance with manufacturer's instructions.



Common Available Sizes		B
W x H	Nom. Duct Size D	
8 x 4	4", 5" dia.	12
10 x 4	4", 5", 6" dia.	
12 x 4	6", 7", 8" dia.	
8 x 6	6" dia.	
10 x 6	5", 6", 7" dia.	
12 x 6	6", 7", 8", 9" dia.	12
8 x 8	5", 6" dia.	
10 x 8	7", 8" dia.	
12 x 8	7", 8" dia.	
10 x 10	7", 8" dia.	12
12 x 12	8" dia.	
	9", 10" dia.	14

W x H = Nominal Grille/Register Size

Dimensions are in inches.

Contact Manufacturer for additional dimensions not listed.

MODEL 509RD